

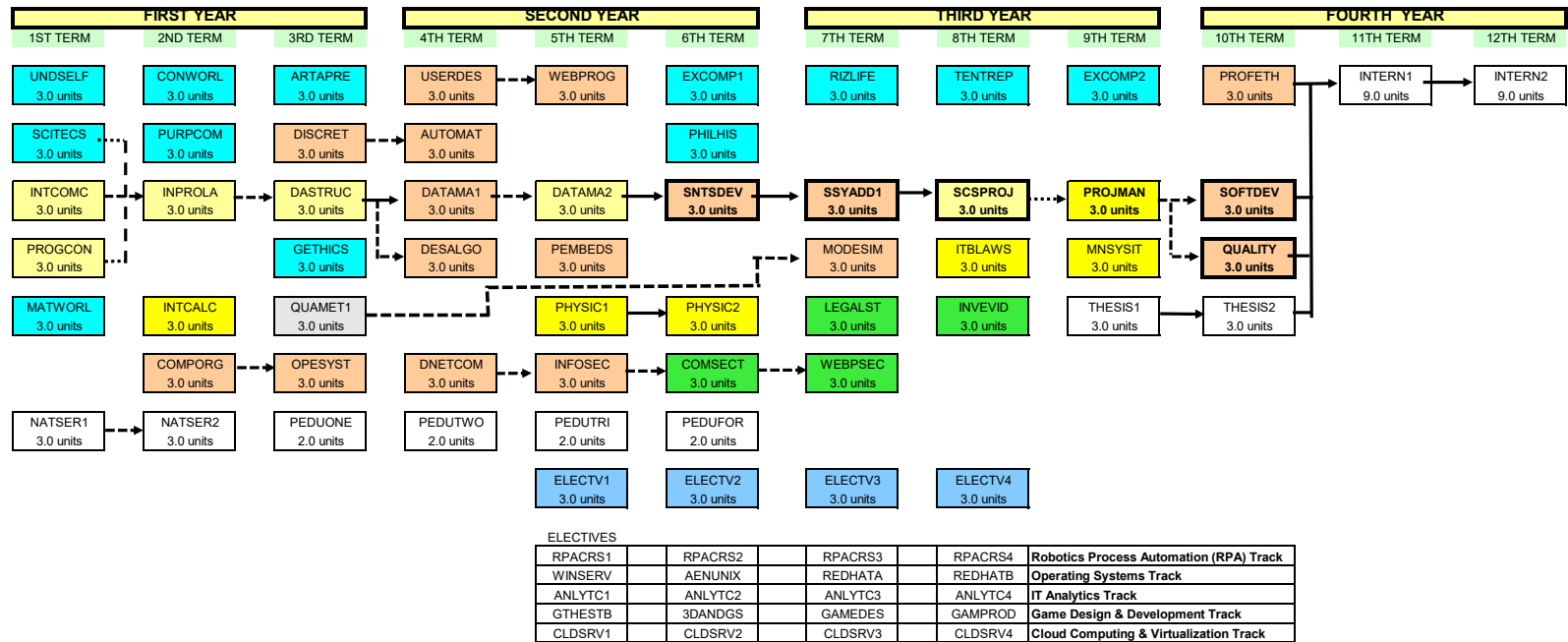


# BACHELOR OF SCIENCE IN COMPUTER SCIENCE

## BSCS-CF

### With Specialization Cyber Security & Forensics

2025-2026



188  
UNITS

18

18

20

17

20

20

18

15

12

12

9

9

Note \*   courses in heavily outlined boxes are under Project-Based Learning (PBL)

PREPARED BY: Roselle Wednesday Gardon  
Program Director, Computer Science

APPROVED BY: Rhea-Luz R. Valbuena  
Executive Director, School of Computing & Information Technologies



# BACHELOR OF SCIENCE IN COMPUTER SCIENCE

## BSCS-CF

### With Specialization Cyber Security & Forensics

2025-2026

GENERAL EDUCATION		
ARTAPRE	ART APPRECIATION	3 units
GETHICS	ETHICS	3 units
PURPCOM	PURPOSIVE COMMUNICATION	3 units
CONWORL	THE CONTEMPORARY WORLD	3 units
MATWORL	MATHEMATICS IN THE MODERN WORLD	3 units
PHILHIS	READINGS IN PHILIPPINE HISTORY	3 units
SCITECS	SCIENCE, TECHNOLOGY & SOCIETY	3 units
UNDESELF	UNDERSTANDING THE SELF	3 units
		<b>24 units</b>

GE ELECTIVES		
EXCOMP1	EXTENSIVE COMPETENCY COMMUNICATION PROGRAM 1	3 units
EXCOMP2	EXTENSIVE COMPETENCY COMMUNICATION PROGRAM 2	3 units
TENTREP	TECHNOPRENEURSHIP	3 units
		<b>9 units</b>

REQUIRED COURSE/S		
RIZLIFE	THE LIFE AND WORKS OF RIZAL	3 units
		<b>3 units</b>

PHYSICAL EDUCATION		
PEDUONE	PHYSICAL EDUCATION 1	2 units
PEDUTWO	PHYSICAL EDUCATION2	2 units
PEDUTRI	PHYSICAL EDUCATION 3	2 units
PEDUFOR	PHYSICAL EDUCATION 4	2 units
		<b>8 units</b>

NATIONAL SERVICE		
NATSER1	NATIONAL SERVICE1	3 units
NATSER2	NATIONAL SERVICE2	3 units
		<b>6 units</b>

INTERNSHIP		
INTERN1	INTERNSHIP 1	9 units
INTERN2	INTERNSHIP 2	9 units
		<b>18 units</b>

ADDITIONAL MATH REQUIREMENT		
QUAMET1	QUANTITATIVE METHODS 1	3 units
		<b>3 units</b>

COMMON COURSES		
INTCOMC	INTRODUCTION TO COMPUTING FOR CS / IT	3 units
PROGCON	PROGRAMMING CONCEPTS & LOGIC	3 units
INPROLA	INTRODUCTION TO PROGRAMMING LANGUAGES	3 units
DASTRUC	DATA STRUCTURES	3 units
DATAMA2	DATABASE MANAGEMENT 2 and ADMINISTRATION	3 units
SCSPROJ	APPLIED PROJECT FOR CS	3 units
		<b>18 units</b>

PROFESSIONAL COURSES		
USERDES	UI/UX DESIGN AND PROGRAMMING	3 units
COMPORG	COMPUTER ORGANIZATION & ARCHITECTURE	3 units
DATAMA1	DATABASE MANAGEMENT 1	3 units
DESALGO	DESIGN AND ANALYSIS OF ALGORITHMS	3 units
DISCRET	DISCRETE MATHEMATICS	3 units
WEBPROG	WEB PROGRAMMING	3 units
OPESTST	OPERATING SYSTEMS	3 units
AUTOMAT	AUTOMATA THEORY	3 units
MODESIM	MODELING, SIMULATION AND AI	3 units
DNETCOM	NETWORK SECURITY, STORAGE & DATA COMMUNICATION	3 units
SOFTDEV	SOFTWARE DEVELOPMENT	3 units
INFOSEC	INFORMATION SECURITY	3 units
QUALITY	SOFTWARE QUALITY MANAGEMENT	3 units
PROFETH	PROFESSIONAL ETHICS	3 units
SNTSDEV	INTRODUCTION TO SYSTEMS AND DESIGN	3 units
SSYADD1	SYSTEMS ANALYSIS & DETAILED DESIGN	3 units
PEMBEDS	PROGRAMMING EMBEDDED SYSTEMS	3 units
		<b>51 units</b>

ELECTIVES: GAME DESIGN & DEVELOPMENT TRACK		
GTHESTB	GAME THEORY & STORYBOARDING	3 units
3DANDGS	3D Animation and Digital Sound	3 units
GAMEDES	GAME DESIGN & DEVELOPMENT	3 units
GAMPROD	GAME PRODUCTION	3 units

ELECTIVES: SECURITY TRACK		
COMSEC1	COMPUTER SECURITY 1	3 units
COMSEC2	COMPUTER SECURITY 2	3 units
COMSEC3	COMPUTER SECURITY 3	3 units
WEBPSEC	WEB APPLICATION & PROGRAMMING SECURITY	3 units

ELECTIVES: CLOUD COMPUTING & VIRTUALIZATION TRACK		
CLDSRV1	CLOUD SERVICE 1	3 units
CLDSRV2	CLOUD SERVICE 2	3 units
CLDSRV3	CLOUD SERVICE 3	3 units
CLDSRV4	CLOUD SERVICE 4	3 units

AUGMENTED COURSES		
MNSYSIT	MANAGEMENT INFORMATION SYSTEMS & IT TRENDS	3 units
ITBLAWS	IT AND BUSINESS LAWS	3 units
PHYSIC1	PHYSICS FOR CS 1	3 units
PHYSIC2	PHYSICS FOR CS 2	3 units
PROJMAN	PROJECT MANAGEMENT	3 units
INTCALC	INTRODUCTION TO CALCULUS	3 units
		<b>18 units</b>

THESIS		
THESIS1	THESIS WRITING 1	3 units
THESIS2	THESIS WRITING 2 AND PRESENTATION	3 units
		<b>6 units</b>

CYBERSECURITY & FORENSICS SPECIALIZATION TRACK		
COMSECT	COMPUTER SECURITY	3 units
WEBPSEC	WEB PENETRATION SECURITY	3 units
LEGALST	LEGAL STUDIES (FORENSICS)	3 units
INVEVID	PRINCIPLES OF INVESTIGATION & EVIDENCE HANDLING	3 units
		<b>12 units</b>

PROFESSIONAL ELECTIVES		
ELECTV1	ELECTIVE 1	3 units
ELECTV2	ELECTIVE 2	3 units
ELECTV3	ELECTIVE 3	3 units
ELECTV4	ELECTIVE 4	3 units
		<b>12 units</b>

ELECTIVES: ROBOTIC PROCESS AUTOMATION TRACK		
RPACRS1	RPA PRIMER	3 units
RPACRS2	UIPATH ESSENTIALS	3 units
RPACRS3	UIPATH ADVANCE	3 units
RPACRS4	RPA SOLUTION	3 units

ELECTIVES: OPERATING SYSTEMS TRACK		
WINSERV	WINDOWS SERVER	3 units
AENUNIX	ADVANCED & ENTERPRISE UNIX	3 units
REDHATA	RED HAT TOPICS A	3 units
REDHATB	RED HAT TOPICS B	3 units

ELECTIVES: IT BUSINESS ANALYTICS TRACK		
ANLYTC1	FUNDAMENTALS OF BUSINESS ANALYTICS	3 units
ANLYTC2	FUNDAMENTALS OF ENTERPRISE DATA MANAGEMENT	3 units
ANLYTC3	FUNDAMENTALS OF ANALYTICS MODELING	3 units
ANLYTC4	ANALYTICS TECHNIQUES, TOOLS & APPLICATION	3 units